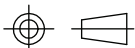
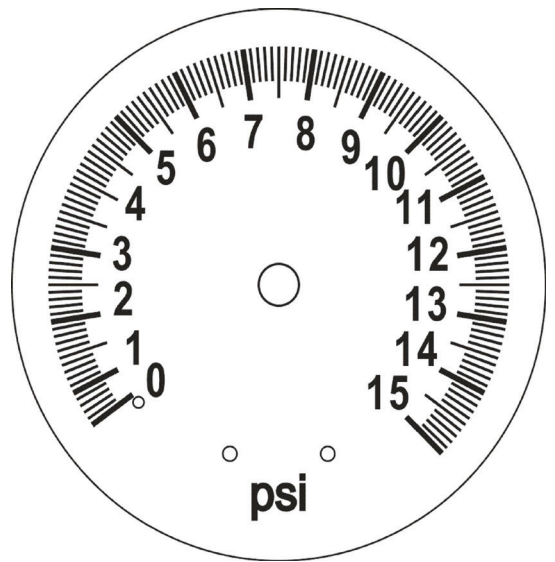


Notes:

1. Accuracy: grade B ($\pm 3\%$, $\pm 2\%$, $\pm 3\%$)
2. ANSI B40.1 gauges
3. Pressure gauges dial size: 2", pressure range: 15 psi
4. Hex manifold material: Q 235, chrome plated, Socket thread: 3/4" FNPT
5. Sniffer valve should not leak under 200 psi, and should release pressure smoothly

No.	Parts	Q'ty	Material	Note
1	Socket	1	Hpb59-1	
2	Dial plate	1	Al alloy	White background
3	Case	1	ST14	Black
4	Bezel	1	ST14	Black
5	Lens	1	Acrylic	
6	Hex manifold	1	Q235	Chrome plated
7	Sniffer valve	1	Hpb59-1	Chrome plated
		GAUGE 2" ,15 psi		PART NO:200370
UNIT: mm		3/4" NPT HORIZONTAL SOCKET		

DIAL PLATE:



**premium.
industrial.
products.**