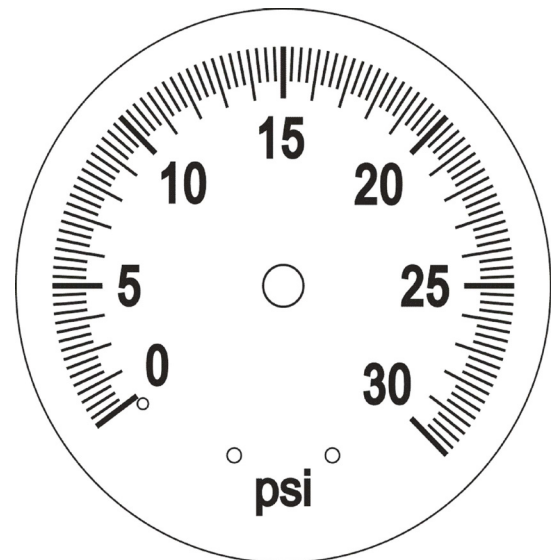
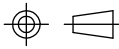


**Notes:**

1. Accuracy: grade B ( $\pm 3\%$ ,  $\pm 2\%$ ,  $\pm 3\%$ )
2. ANSI B40.1 gauges
3. Pressure gauges dial size: 2", pressure range: 30 psi
4. Bell housing manifold material: cast iron, black antirust paint, Socket thread: 1/2" FNPT
5. Snifter valve should not leak under 200 psi, and should release pressure smoothly

**DIAL PLATE:**



No.	Parts	Q'ty	Material	Note
1	Socket	1	Hpb59-1	
2	Dial plate	1	Al alloy	White background
3	Case	1	ST14	Black
4	Bezel	1	ST14	Black
5	Lens	1	Acrylic	
6	Bell housing manifold	1	Cast iron	Black antirust paint
7	Snifter valve	1	Hpb59-1	Chrome plated
		GAUGE 2" ,30 psi		PART NO:200372
UNIT: mm		1/2" NPT BELL HOUSING SOCKET		

**premium.  
industrial.  
products.**