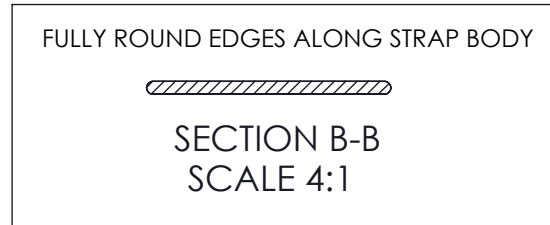
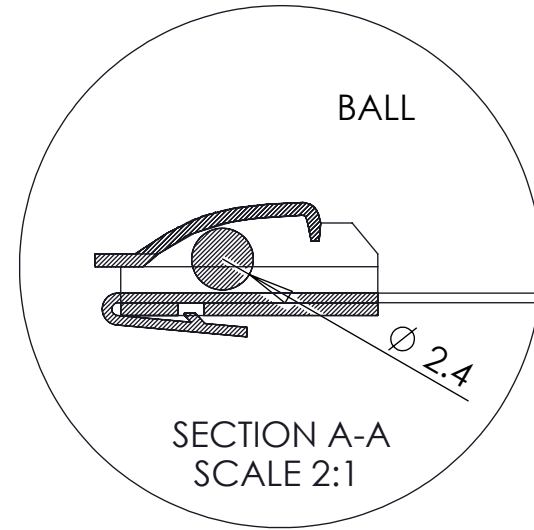
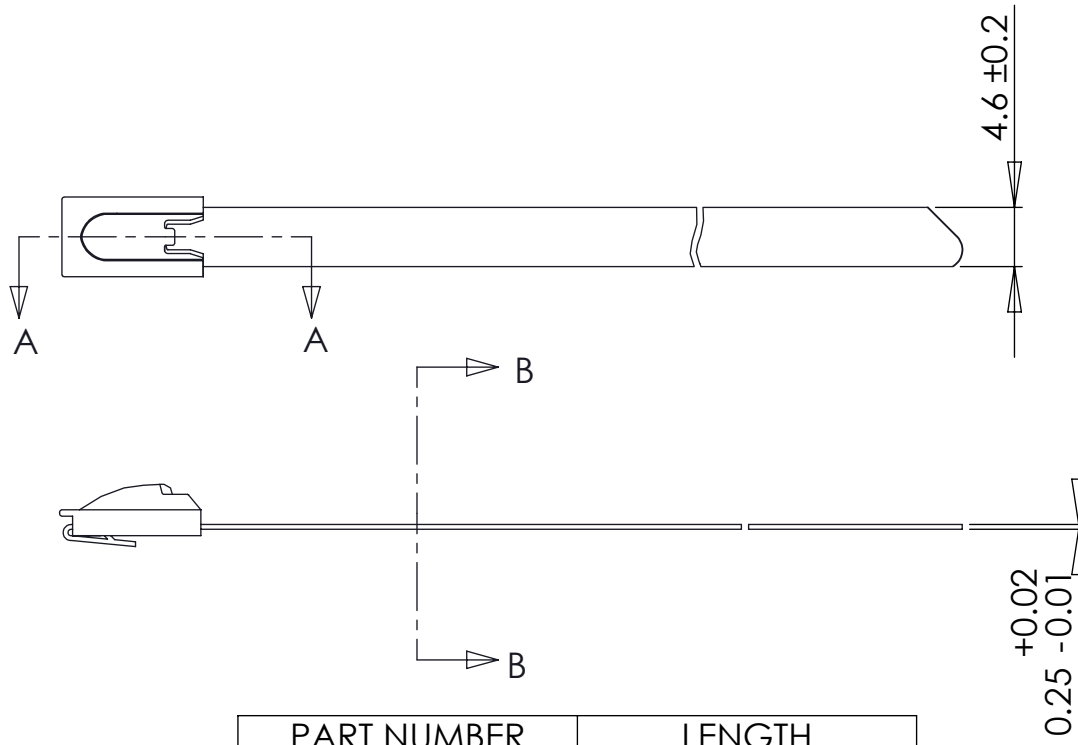


REV	DATE	NOTES
A	10/12/11	Initial Release



PART NUMBER	LENGTH
CTSS4-100	100 [4]
CTSS6-100	150 [6]
CTSS8-100	200 [8]
CTSS10-100	250 [10]
CTSS12-100	300 [12]
CTSS14-100	350 [14]
CTSS16-100	400 [16]
CTSS18-100	450 [18]
CTSS20-100	500 [20]
CTSS22-100	550 [22]
CTSS24-100	600 [24]
CTSS26-100	650 [26]
CTSS28-100	700 [28]
CTSS30-100	750 [30]
CTSS33-100	850 [33]
CTSS47-100	1200 [47]

Notes:

- All components to be compliant with RoHS, California Proposition 65, EU REACH SVHC, and US Consumer Product Safety Commission directives for hazardous substances
- Min Loop Tensile Strength = 100 lbs
- Length ≤ 300mm±5mm; Length > 300mm±10mm
- Operating Temperature: -60C to 300C (-76F to 572F)
- Parts to be free of burrs and sharp edges

**PROPRIETARY AND CONFIDENTIAL**  
 THE INFORMATION CONTAINED IN THIS DRAWING IS THE SOLE PROPERTY OF **CAMBRIDGE RESOURCES**. ANY REPRODUCTION IN PART OR AS A WHOLE WITHOUT THE WRITTEN PERMISSION OF **CAMBRIDGE RESOURCES** IS PROHIBITED.

DRAWN	CHECKED	DATE	<b>CAMBRIDGE</b>		
RH	RH	10/11/11	960 Alabama Ave, Brooklyn, NY 11207 P:718-649-1666 F:718-485-4403		
UNLESS OTHERWISE SPECIFIED:			TITLE:		
DIMENSIONS ARE IN MILLIMETERS [ ] DENOTES INCHES SEE NOTES			Cambridge Stainless Steel Cable Ties 100lb Tensile Strength		
MATERIAL SS304			SIZE	DWG. NO.	REV
FINISH SEE NOTES			<b>A</b>	CTSSX-100	<b>A</b>
DO NOT SCALE DRAWING			SCALE: 1.7:1		SHEET 1 OF 1