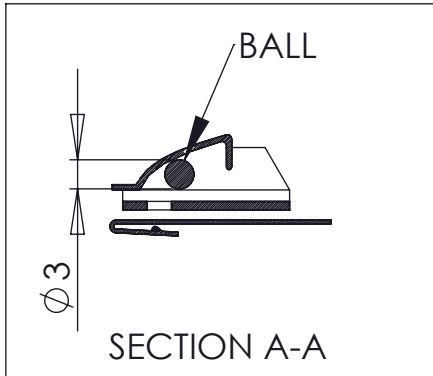
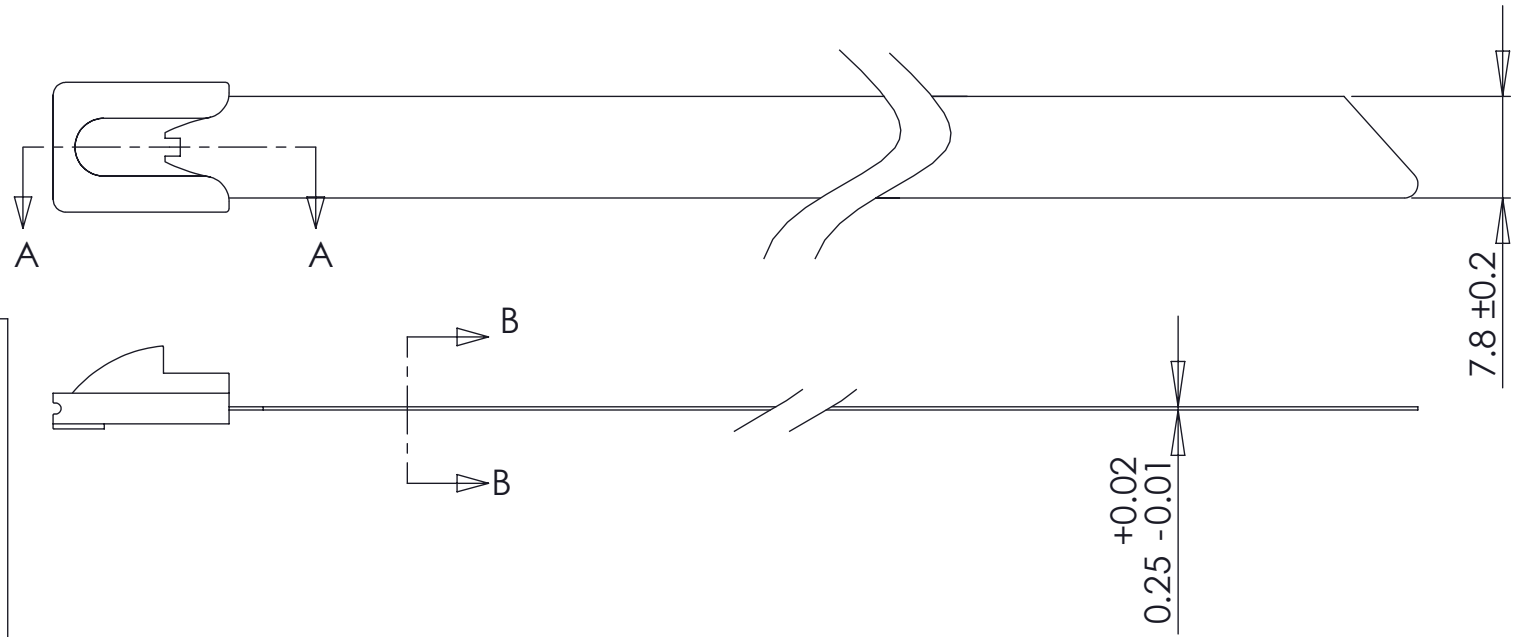


REV	DATE	NOTES
A	10/12/11	Initial Release



FULLY ROUND EDGES ALONG STRAP BODY

SECTION B-B  
SCALE 4:1

PART NUMBER	LENGTH
CTSS4-250	100 [4]
CTSS6-250	150 [6]
CTSS8-250	200 [8]
CTSS10-250	250 [10]
CTSS12-250	300 [12]
CTSS14-250	350 [14]
CTSS16-250	400 [16]
CTSS18-250	450 [18]
CTSS20-250	500 [20]
CTSS22-250	550 [22]
CTSS24-250	600 [24]
CTSS26-250	650 [26]
CTSS28-250	700 [28]
CTSS30-250	750 [30]
CTSS33-250	850 [33]
CTSS47-100	1200 [47]

- Notes:
- All components to be compliant with RoHS, California Proposition 65, EU REACH SVHC, and US Consumer Product Safety Commission directives for hazardous substances
  - Min Loop Tensile Strength = 250 lbs
  - Length ≤ 300mm±5mm; Length > 300mm±10mm
  - Parts to be free of burrs and sharp edges

DRAWN RH	CHECKED RH	DATE 10/11/11	<b>CAMBRIDGE</b> 960 Alabama Ave, Brooklyn, NY 11207 P:718-649-1666 F:718-485-4403		
UNLESS OTHERWISE SPECIFIED:					
DIMENSIONS ARE IN MILLIMETERS [ ] DENOTES INCHES SEE NOTES			TITLE: Cambridge Stainless Steel Cable Ties 250lb Tensile Strength		
MATERIAL SS304			SIZE <b>A</b>	DWG. NO. CTSSX-250	REV A
FINISH SEE NOTES			SCALE: 1.7:1		SHEET 1 OF 1
DO NOT SCALE DRAWING					

**PROPRIETARY AND CONFIDENTIAL**  
 THE INFORMATION CONTAINED IN THIS DRAWING IS THE SOLE PROPERTY OF **CAMBRIDGE RESOURCES**. ANY REPRODUCTION IN PART OR AS A WHOLE WITHOUT THE WRITTEN PERMISSION OF **CAMBRIDGE RESOURCES** IS PROHIBITED.