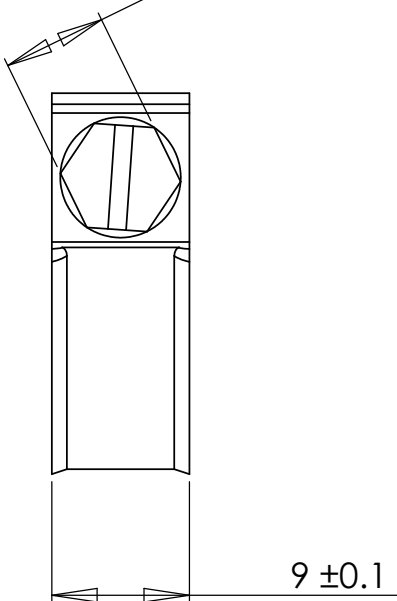
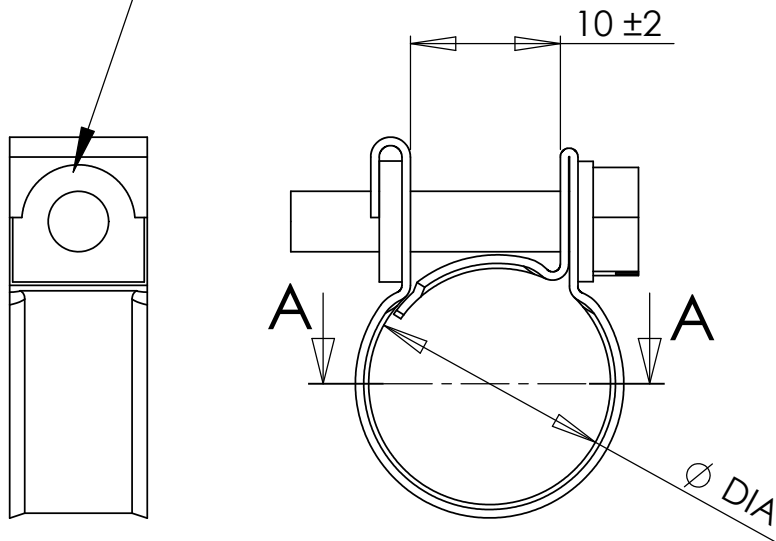
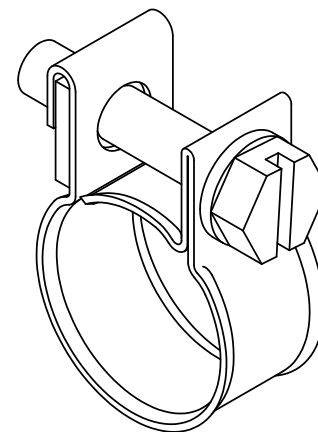


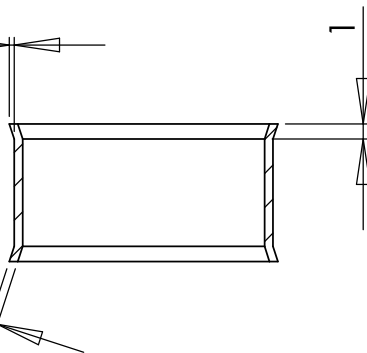
SQUARE NUT TO BE COMPLETELY IMMOBILIZED

7mm Slotted Hex Head



0.30 Min Flare
On Edge

0.60 ± 0.05
BAND THICKNESS



SECTION A-A

PART #	MIN DIA	MAX DIA	FITS HOSE I.D.
HCM-4F	7/16" 11mm	1/2" 13mm	1/4"
HCM-6F	1/2" 13mm	9/16" 15mm	5/16"
HCM-8F	9/16" 14mm	5/8" 16mm	3/8"



PROPRIETARY AND CONFIDENTIAL
THE INFORMATION CONTAINED IN THIS DRAWING IS THE SOLE PROPERTY OF **CODA RESOURCES**. ANY REPRODUCTION IN PART OR AS A WHOLE WITHOUT THE WRITTEN PERMISSION OF **CODA RESOURCES** IS PROHIBITED.

Notes:

1. Meets SAE J1508 Specification
2. RoHS Compliant - No Hexavalent Chromium - Cr(VI)
3. Recommended Tightening Torque 13 in·lbs
4. All surface to be clean and polished
5. Parts to be free of burrs and sharp edges

NAME	DATE	CODA RESOURCES 960 Alabama Ave, Brooklyn, NY 11207 P:718-649-1666 F:718-485-4403	
DRAWN RH	11-23-09		
UNLESS OTHERWISE SPECIFIED:		TITLE:	
DIMENSIONS ARE IN MILLIMETERS		SERIES 1100 FUEL INJECTION CLAMPS	
MATERIAL	ZINC PLATED	SIZE	DWG. NO.
FINISH		A	Fuel Injection Clamp Rev A
DO NOT SCALE DRAWING		SCALE: 2:1	REV A
			SHEET 1 OF 1