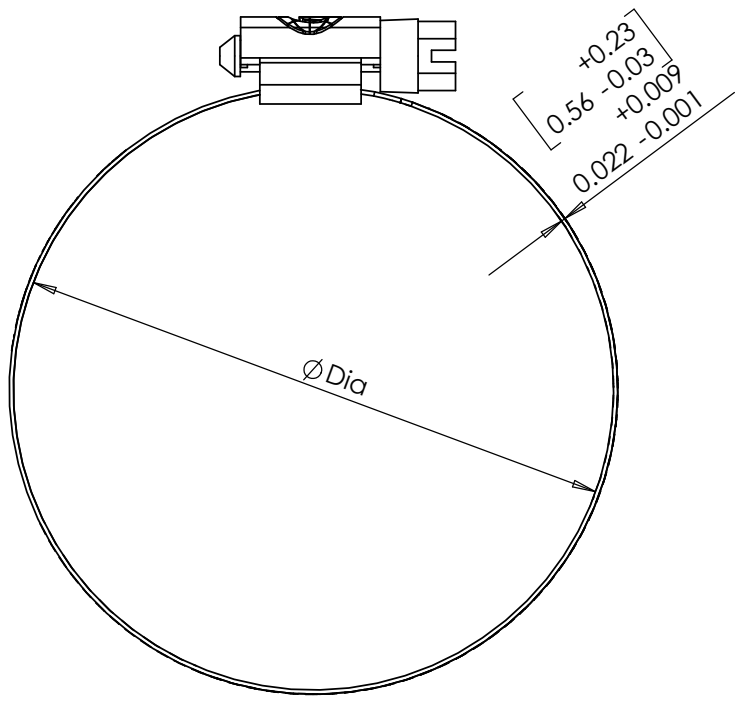
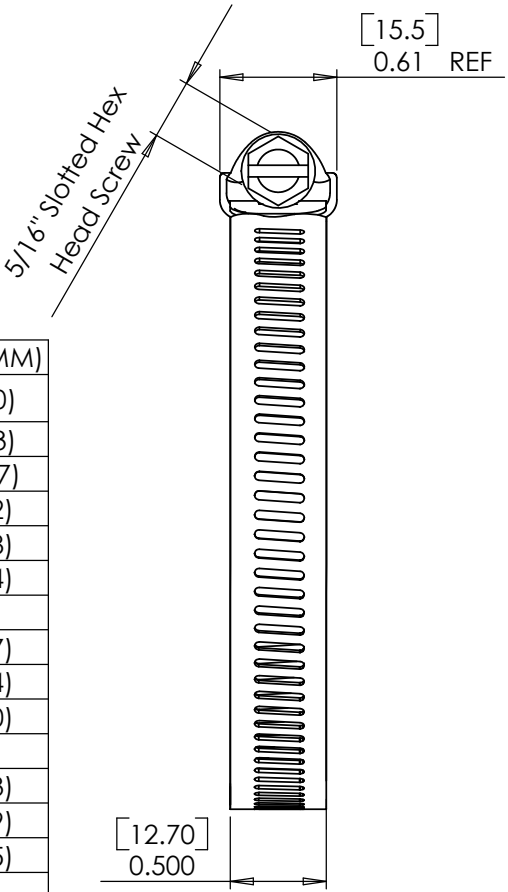
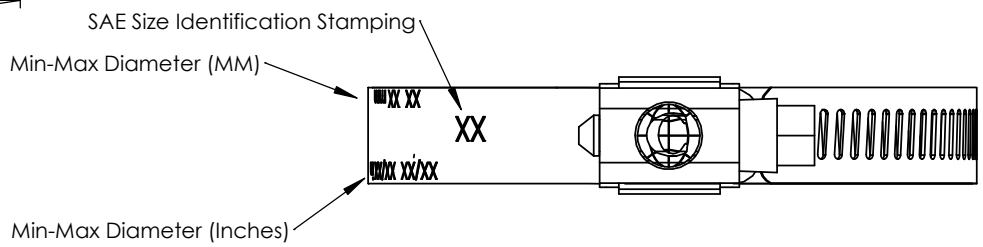


Rev.	Date	Notes
A	10/01/09	Initial Release



PART #	MIN DIA (MM)	MAX DIA (MM)
HC2-6S	7/16" (11)	25/32" (20)
HC2-8S	1/2" (13)	29/32" (23)
HC2-10S	9/16" (14)	1-1/16" (27)
HC2-12S	11/16" (17)	1-1/4" (32)
HC2-16S	13/16" (21)	1-1/2" (38)
HC2-20S	13/16" (21)	1-3/4" (44)
HC2-24S	1-1/16" (27)	2" (51)
HC2-28S	1-5/16" (33)	2-1/4" (57)
HC2-32S	1-9/16" (40)	2-1/2" (64)
HC2-36S	1-13/16" (46)	2-3/4" (70)
HC2-40S	2-1/16" (52)	3" (76)
HC2-44S	2-5/16" (59)	3-1/4" (83)
HC2-48S	2-9/16" (65)	3-1/2" (89)
HC2-52S	2-13/16" (71)	3-3/4" (95)
HC2-56S	3-1/16" (78)	4" (102)
HC2-64S	3-9/16" (90)	4-1/2" (114)
HC2-72S	4-1/8" (105)	5" (127)
HC2-80S	4-5/8" (117)	5-1/2" (140)
HC2-88S	5-1/8" (133)	6" (152)
HC2-96S	5-5/8" (143)	6-1/2" (165)
HC2-104S	6-1/8" (159)	7" (178)



CODA RESOURCES, LTD

PROPRIETARY AND CONFIDENTIAL

THE INFORMATION CONTAINED IN THIS DRAWING IS THE SOLE PROPERTY OF CODA RESOURCES. ANY REPRODUCTION IN PART OR AS A WHOLE WITHOUT THE WRITTEN PERMISSION OF CODA RESOURCES IS PROHIBITED.

- Notes:
- Meets SAE J1508 Specification
 - RoHS Compliant - No Hexavalent Chromium - Cr(VI)
 - Material: Band and Housing - 200 Series Stainless Steel
Screw - 400 Series Stainless Steel
 - Screw Free Torque 4 in·lbs Max
 - Durability Torque 60 in·lbs Min
 - All surface to be clean and polished
 - Parts to be free of burrs and sharp edges

NAME	DATE	CAMBRIDGE	
DRAWN RH	10-01-09	960 Alabama Ave, Brooklyn, NY 11207 P:718-649-1666 F:718-485-4403	
UNLESS OTHERWISE SPECIFIED:		TITLE:	
DIMENSIONS ARE IN INCHES [] DENOTES MILLIMETER TOLERANCES x.xx ± 0.02 [0.51] x.xxx ± 0.005 [0.13]		SERIES 2000, 1/2" BAND HOSE CLAMPS	
MATERIAL SEE NOTES	SIZE A	DWG. NO. HC2-XS Series Rev A	REV A
FINISH	DO NOT SCALE DRAWING	SCALE: 1:1	SHEET 1 OF 1